

# Greenhouse gas mitigation scenarios in the solid waste sector for compliance with the Brazilian NDC: Case study of the Recife metropolitan area, Brazil

Waste Management & Research

1–12

© The Author(s) 2023

Article reuse guidelines:

sagepub.com/journals-permissions

DOI: 10.1177/0734242X231168053

journals.sagepub.com/home/wmr



Ana Maria Cardoso de Freitas Gama<sup>1</sup> , José Fernando Thomé Jucá<sup>1</sup>  
and Alessandra Barbosa Lee Firmo<sup>2</sup>

## Abstract

The Intergovernmental Panel on Climate Change (IPCC) indicates that the waste sector is a potential emitter of methane gas (CH<sub>4</sub>), which has a greenhouse effect up to 28 times greater than that of carbon dioxide (CO<sub>2</sub>). The management of municipal solid waste (MSW) generates greenhouse gases (GHG) directly through emissions from the process itself as well as indirectly through transportation and energy consumption. The objective of this study was to evaluate the GHG emissions contributed by the waste sector in the Recife metropolitan region (RMR) and to define mitigation scenarios to comply with the Brazilian Nationally Determined Contribution (NDC), a result of the Paris Agreement. To achieve this, an exploratory study was carried out, including a literature review, collection of data, estimation of emissions using the IPCC model (2006), and comparison between the values assumed by the country in 2015 and those estimated in the adopted mitigation scenarios. The RMR is composed of 15 municipalities, has an area of 3,216,262 km<sup>2</sup> and a population of 4,054,866 inhabitants (2018), generating approximately 1.4 million *t*-year of MSW. It was estimated that, in the period from 2006 to 2018, 25.4 million *t*CO<sub>2</sub>e were emitted. The comparative analysis between the absolute values defined in the Brazilian NDC and the results from the mitigation scenarios showed that approximately 36 million *t*CO<sub>2</sub>e could be avoided through the disposal of MSW in the RMR, equivalent to a 52% reduction in emissions estimated for 2030, a percentage greater than the 47% reduction assumed in the Paris Agreement.

## Keywords

MSW management, GHG emissions, Brazilian NDC, CO<sub>2</sub> equivalent, global warming potential, UNFCCC, IPCC

Received 22nd July 2022, accepted 19th March 2023 by Associate Editor Mohan Dangi.

## Introduction

Since the Stockholm Conference in 1972, the environment has become a truly global concern and a definitive part of international negotiations (Gama, 2003). More than 178 countries, 102 heads of state and around 4000 non-governmental organizations participated in the United Nations Conference on Environment and Development, held in Rio de Janeiro, Brazil in 1992 and known as Eco 92. This conference sought to develop strategies to control environmental degradation and promote sustainable development. Among the results from this event was the convention on climate change, known as the United Nations Framework Convention on Climate Change (UNFCCC).

## Literary review

The UNFCCC came into force in March 1994 and in December 2015, with 197 countries adhering, with the aim of stabilizing the concentration of greenhouse gases (GHG) in the atmosphere

at a level that would avoid dangerous anthropogenic interference with the climate (BRAZIL, 2010). On the other hand, more than half of the world's population (3.6 billion) lives in cities (PBMC, 2016).

In terms of growth, an increase in urban population of 5.6 to 7.1 billion people is expected between 2018 and 2050, or 64 to 68% of the world population (UN, 2018). As a result, the production of materials necessary to support this urban growth will alone generate 10 billion tons of carbon emissions, that is,

<sup>1</sup>Department of Civil Engineering, Federal University of Pernambuco, Recife, Brazil

<sup>2</sup>Federal Institute of Education, Science, and Technology of Pernambuco, Recife, Brazil

## Corresponding author:

Ana Maria Cardoso de Freitas Gama, Department of Civil Engineering, Federal University of Pernambuco, Rua Amauri de Medeiros 110/301, Derby, Recife, PE, CEP 32010-120, Brazil.  
Email: anacfgama@gmail.com

about half the total allowed in order to meet the goal of limiting the average temperature increase of the planet to 2°C by 2100 (PBMC, 2016).

GHG emissions have been the subject of studies by the Intergovernmental Panel on Climate Change (IPCC), created in 1988 at the initiative of the United Nations Environment Programme (UNEP) and by the World Meteorological Organization, with the purpose of providing comprehensive assessments with scientific, technical and socioeconomic knowledge on climate change, its causes, repercussions and response strategies.

The guidelines of the IPCC have been adopted worldwide for quantifying the national emission inventories, which include wastewater treatment plants as a key category (Paredes et al., 2019). The method distinguishes between the categories of disposal and the waste treatment in accordance with the physical nature of the residue responsible for the generation of GHG (i.e. landfill, incineration, composting, etc.) (Loureiro et al., 2013).

The IPCC (2016) presents evidence that the planet has been warming up since the pre-industrial era, that human action is one of the most relevant factors in this process (PBMC, 2016), and that the principal contributions to emissions come from cities. Urban centres are responsible for 70% of the available energy consumption and 40% of GHG emissions (European Climate Foundation, 2014; Rosenzweig et al., 2011).

According to the IPCC (2016), the Convention on Climate Change and the Kyoto Protocol regulate several GHG, of which the principal GHGs are methane (CH<sub>4</sub>) and carbon dioxide (CO<sub>2</sub>).

One of the most important by-products of urban living is solid waste, which stands out as a principal cause of environmental impacts and generation of GHG, especially methane (CH<sub>4</sub>) and carbon dioxide (CO<sub>2</sub>), derived from industrialization and urbanization (IPCC, 2014). In addition, all waste management practices generate GHG, either directly through emissions from the process itself or indirectly through transportation and energy consumption, for example (UNEP/ISWA, 2015). GHG emissions from methane are 28 times more damaging in terms of a global warming potential (GWP), considering a 100-year time horizon, than those from CO<sub>2</sub> (Seeg, 2017).

According to the IPCC (2014), in global terms, emissions related to transportation and energy consumption are those that contribute most to climate change, with values equivalent to 26 and 30% of total global emissions, respectively. The IPCC also points out that the waste sector contributes about 3 to 5% of total global anthropogenic GHG emissions (IPCC, 2014, 2016).

It is noteworthy that, although globally the contribution of solid waste emissions is 3 to 5%, GHG inventories carried out locally showed that this percentage is much more representative. Solid waste emissions in the state of Pernambuco, for example, progressively increased from 5.5 to 6.1 million tCO<sub>2</sub>e between the period 2015 and 2018 (PERNAMBUCO, 2019), and successively representing approximately 28%, second in the ranking of total emissions in the state, when compared to the sectors of

transport 32%, land use 25% and energy 15%. In the same way, Loureiro et al. (2013) stated that in Rio de Janeiro city, the waste sector was the second largest source of GHG emissions, representing 21.0% of total municipal emissions. Solid waste sub-sector accounted for the second largest source of emissions of subsectors in Rio de Janeiro city, corresponding to 14.1% of total emissions, behind only emissions from light road transport, part of energy use sector, corresponding to 26.2% of total emissions in the city. Both cases are very high when compared to the representativeness of this sector in Brazil, which is around 3% (Brazil, 2016).

Organic waste disposed in landfills is one of the main sources of methane (CH<sub>4</sub>) emissions (IPCC, 2014). The landfill sites contain nearly 50–60% of organic contents, and they undergo anaerobic decomposition with a help of microbes in the waste dumps and contribute to a higher percent of methane emissions (Ramprasad et al., 2022). These emissions are projected to potentially increase fourfold from 2010 to 2050, due to population growth and economic development in low- and middle-income countries (UNEP, 2011).

This sector, however, has the greatest mitigation potential, with repercussions in other sectors, such as energy and agriculture.

A holistic approach to waste management has positive consequences for emissions from the energy, forestry, agriculture, mining, transportation and manufacturing sectors (UNEP, 2011).

Pursuing the prioritization of waste prevention and recovery as secondary materials or energy is fundamental, because a significant increase in waste management practices in anaerobic conditions in landfills means an increase in the generation of methane gas emission. In recent decades, waste disposal occurred in sanitary landfills, controlled landfills and dumps, which according to (Brazilian Association of Cleaning Companies Public and Special Waste (ABRELPE) 2016), Seeg (2017), Paz and Firmo (2015) and Jucá et al. (2013) contribute differently to the generation of GHG. The sanitary landfills, through anaerobic biodigestion, generate more methane than controlled landfills or dumps, if the biogas is not collected and do not have beneficially used.

Anaerobic digestion is a biological process that decomposes organic waste, producing biogas. According to Santos et al. (2020), anaerobic digestion is a viable alternative to treat solid waste, because some of the waste generates renewable energy, produces biofertilizers and mitigates emissions.

Oliveira et al. (2018) adds that anaerobic digestion, as a treatment for the organic fraction of solid and semi-solid residues and to produce methane, is a technology used worldwide.

According to Costa and Dias (2019), the use of biogas, besides being a renewable source of energy, also contributes to the reduction of methane and carbon dioxide emissions in the atmosphere, gases that aggravate the greenhouse effect.

Sustainable waste management is relevant for the reduction of GHG emissions, with the sector having the potential to become a mitigation option instead of an emissions source in a

circular economy approach that includes the elimination of waste through the reuse of materials and components and the extension of product life (GIZ, 2017). The efficiency of basic management processes such as collection, transportation and disposal is directly related to the reduction of GHG emissions (Caetano et al., 2019).

The disposal and treatment of solid waste is the third more important emission source requiring education campaigns to sustainable consumption and technologies to avoid GHG emissions during solid waste treatment (Baltar et al., 2021).

Global GHG emissions from the waste sector amounted to around 1.5 GtCO<sub>2</sub>e in 2010, of which approximately 0.6 GtCO<sub>2</sub>e were due to the disposal of solid waste, 0.75 GtCO<sub>2</sub>e were from effluents, and the remainder was from incineration and other waste treatments (IPCC, 2014). In 2016, there were 1.6 GtCO<sub>2</sub>e (Seeg, 2017).

According to (UNEP, 2018), in order to limit warming to 2° Celsius by 2100, it will be necessary to reduce GHG emissions in 2030 to 20% less than 2010 levels and to reach zero emissions by 2075.

The state of Pernambuco in Brazil is one of the most vulnerable regions in the world to the effects of climate change, especially the Recife metropolitan region (RMR). De fact, IPCC (IPCC, 2016) recognized Recife, capital of Pernambuco as one of the most vulnerable cities to climate change in the world, due to geographical characteristics and the process of historic urban occupation (Baltar et al., 2021).

The legal framework for solid waste management in Brazil was defined by the National Policy for Basic Sanitation, Law no. 11,445/2007 (BRAZIL, 2007), and the National Policy for Solid Waste (PNRS), Law no. 12.305/2010 (BRAZIL, 2010), which defines principles, guidelines, and obligatory waste plans, which are the most significant management instruments. In a complementary way, creates the entire legal framework for the establishment of public-private partnerships, promoting necessary private sector participation. In 2015, Law no. 13.089 (BRAZIL, 2015b), instituted the Metropolitan Statute, which defines public functions of common interest for metropolitan regions and considers solid waste to be a public concern, whose generation constitutes a high potential for emission of GHG.

Costa et al. (2019) observed that even with almost a decade since the approval of the PNRS, the garbage collection process is still not contemplated throughout the country. According to the ABRELPE (2019), in 2017, approximately 7 million tons of waste generated had unidentified destination.

In 2009, Law no. 12.187/2009 of the National Policy on Climate Change defined voluntary targets for reducing GHG of between 36.1 and 38.9% of projected emissions by 2020.

The Paris Agreement (BRAZIL, 2015) came into force at the international level in November 2016. Brazil committed to adopt measures to reduce GHG through a nationally determined contribution (NDC).

The Brazilian NDC applies to the economy as a whole in order to achieve the 2025 and 2030 goals (BRAZIL, 2017).

Despite challenges such as eradication of poverty, education, public health, employment, housing, infrastructure and access to energy, according to (Kässmayer and Fraxe Neto, 2016), Brazil reduced its emissions by more than 41% in 2012, compared to 2005 levels, although currently the trend is for emissions to increase by around 18%.

The Brazilian NDC is committed to reducing GHG emissions by 37% by 2025 and 43% by 2030, compared to 2005 levels, in several sectors of the economy, including the sector responsible for treatment and final disposal of solid waste. This is equivalent to an emissions ceiling of 1.300 and 1.200 MtCO<sub>2</sub>e in 2025 and 2030, respectively (BRAZIL, 2017).

### Research objectives

The general objective of this study is to evaluate the contribution of the urban solid waste sector in the RMR to GHG emissions and to define mitigation scenarios that comply with the nationally determined contribution (NDC), a result of the Paris Agreement in 2015. Specific objectives were as follows:

- (a) To gather primary and secondary data related to the management of solid waste and climate change;
- (b) To characterize the management of household solid urban waste in the RMR during the period from 2006 to 2018;
- (c) To estimate the GHG emissions from the disposal of MSW in the RMR from 2006 to 2030, based on the year 2005;
- (d) To define scenarios for mitigation GHG emissions and
- (e) To determine emissions that must be avoided in order to comply with the Brazilian NDC in 2025 and 2030.

### Materials and methods

This study, began with an exploratory research based on a literary and legal review of the themes involved, followed by a collection of primary and secondary data from municipalities and waste treatment centres in the RMR.

Municipal solid waste (MSW) disposal sites of the municipalities in the RMR were studied and visited, taking into consideration the various categories of landfills, which went through a transition from dumps (09) to controlled landfills (03) and sanitary landfills (02), from 2006 to 2018.

### Inventory of GHG emissions

To evaluate GHG theoretically, there are different mathematical methods, such as the Mexican model, the LandGEM model of the Environmental Protection Agency (EPA), the Corenostos model and the first-order decay (FOD) model of the IPCC (2006), among others.

In this study, the method chosen to carry out the GHG emission inventory was the IPCC (2006), which prioritizes the disposal of solid waste in the soil in its various categories (dumps controlled landfills and sanitary landfills) and assigns

operational standards and specific local parameters, such as gravimetric composition. This method also considers the temperature and precipitation conditions in which the organic matter is disposed.

The model used was Tier2, which considers the FOD model to estimate GHG, using data from specific activities and years of the RMR and standard factors (default), represented in equations (1) and (2) as follows:

$$Q_{(t)} = \sum^* \left\{ \left[ \left( A * K * MSW_{t(x)} * MSW_{f(x)} * Lo_{(x)} * e^{-k(t-x)} \right) - R * (1 - OX) \right] \right\} \quad (1)$$

Where:

$Q_{(t)}$  – CH<sub>4</sub> emitted

$A$  – Sum normalization factor (dimensionless)

$$A = \frac{1 - e^{-k}}{k} \quad (2)$$

$K$  – CH<sub>4</sub> generation/decay constant (year – 1) year<sup>-1</sup>

$X$  – Category of material (disposition)

$t$  – Year to make inventory

$MSW(t)$  – Total amount of waste generated in the year under study

$MSW(f)$  – Fraction of waste destined for landfill in the year (dimensionless)

$Lo(x, t)$  – CH<sub>4</sub> generation potential ( $tCH_4/tMSW$ )

$R$  – CH<sub>4</sub> recovery ( $tCH_4$ -year)

$OX$  – Oxidation factor (dimensionless)

For the calculation  $K$ , the default values recommended by the IPCC (2006) were taken into account, considering the rainfall for tropical climate, RMR rating.

According to the IPCC (2006), CH<sub>4</sub> ( $Lo$ ) is the potential generated throughout the year and can be estimated based on the determination values of the data collected without soil and as waste management practices at the collection sites. Considering a conversion of amount of degradable organic carbon ( $DDOC_m$ ) in the methane generation potential ( $Lo$ ), which assumes an equation (3).

$$Lo = DDOC_m * F * 16 / 12 \quad (3)$$

$$Q_T = \left\{ \sum MSW_T * MCF * DOC * DOC_f * F * \frac{16}{12} - (R) * (1 * OX) \right\} \quad (6)$$

The object of this study is a RMR, composed of 15 municipalities, and it took as reference the 3<sup>o</sup> National Inventory Brazil, BRAZIL (2016), in which for the forecast of emission it used a municipal breakdown. In this way, sum total is given as follows:

$$\text{Emissions Total} = \sum_J Q_T \quad (7)$$

$J$  - Municipalities

In which

$Lo$  – methane generation potential ( $tCH_4/tMSW$ )

$DDOC_m$  – amount of degradable organic carbon able to decompose

$F$  – fraction of methane in biogas (dimensional)

$12/16$  – Stoichiometric ratio of conversion between methane ( $CH_4$ ) and carbon (C) (dimensionless)

In turn, equation (4) calculates  $DDOC_m$ :

$$DDOC_m = MSW_T * DOC * DOC_f * MCF \quad (4)$$

Where

$MSW_T$  – total amount disposed in the year in type ‘x’ grounding [ $t$ ]

$DOC$  – degradable organic carbon ( $tC/tMSW$ )

$DOC_f$  – fraction of DOC converted into gas at the landfill (dimensional)

$MCF$  – methane correction factor related to the management of disposal sites (dimensionless)

From equations (1) to (3), the amount of methane emitted ( $Q_T$ ) will be determined by equation (5):

$$Q_T = \{ Lo - (R) * (1 - OX) \} \quad (5)$$

From equations (1) and (4), equation (6) will calculate the amount of CH<sub>4</sub> emissions, below:

Therefore, the total emission corresponds to the sum of emissions from all 15 municipalities, for the years 2005–2030. Equation (8), adapted for RMR, per year, is

$$\text{Emissão da RMR} = \sum_J Q_{T(\text{Year})} \quad (8)$$

**Table 1.** Scenarios built to mitigate GHGs in the RMR.

Base scenario 2006–2018	Scenario 1 2019–2025	Scenario 2 2026–2030	Scenario 3 2026–2030
Implementation of the PNRS 03 Controlled landfills 09 Dumps 01 sanitary landfill with centralized gas flare 01 landfill without gas burning	Complementation of the PNRS Adequate disposal 02 sanitary landfills with energy use of CH <sub>4</sub> – reduction of 75% of emissions 01 landfill with gas burning – reduction of 50% Dump – 0 Controlled landfill – 0	Comply the PNRS Adequate disposal 03 sanitary landfills with energy use of CH <sub>4</sub> , reduction off 75% of emissions	Comply the PNRS Adequate disposal 03 sanitary landfills with energy use of CH <sub>4</sub> , reductions 75% of emissions Disposal in landfill only 20% of tailing
3.5% recycled materials Diversion 0.01% organic fraction	15% recycled materials Diversion 5% organic fraction	30% recycled de materials Diversion 10% organic fraction	30% recycled materials Diversion 50% organic fraction

Source: GAMA (2020).

$$Q_{T(\text{car}_{(t)})} = \sum_{(J)} \left\{ \left[ 1 - e^{-k} * \left( \text{MSW}_{T(\text{car}_{(t)})} * \text{MCF} * \text{DOC} * \text{DOC}_f * e^{-k*(t-1)} * F * \frac{16}{12} \right) - R * (1 - \text{OX}) \right] \right\} \quad (9)$$

$J$  - 15 municipalities

By equation (10), DOC is

$$\text{DOC} = (0,40 * A) + (0,24 * B) + (0,15 * C) + (0,43 * D) + (0,20 * E) \quad (10)$$

Where  $A$ ,  $B$ ,  $C$ ,  $D$  and  $E$  corresponds to the fraction of degradable carbon in the disposed waste, obtained from the gravimetric composition.

Finally, equation (11) estimated the amount of methane emitted during the period from 2005 to 2030.

$$Q_{\text{CH}_4(t-1)}^{2030} = Q_{\text{CH}_4(t-25)}^{2005} + Q_{\text{CH}_4(t-24)}^{2006} + Q_{\text{CH}_4(t-23)}^{2007} + (\dots) + Q_{\text{CH}_4(t-1)}^{2030} \quad (11)$$

The estimated methane, converted into  $t\text{CO}_2\text{e}$ , is calculated considering the GWP.

$$t\text{CO}_2\text{e} = Q_T * \text{GWP} \quad (12)$$

Where

$t\text{CO}_2\text{e}$  – total carbon dioxide equivalent.

### Adopted scenarios

The scenarios were conceived taking as a reference the definition of the IPCC (2000), according to which scenarios are alternative images of how in the future appropriate tools for analysis can be developed and how driving forces can influence the future results of emissions and assess uncertainties.

The mitigation scenarios have been built on the guidelines for national inventories of GHG emissions (IPCC, 2006), adapted to Brazilian states and municipalities boundaries.

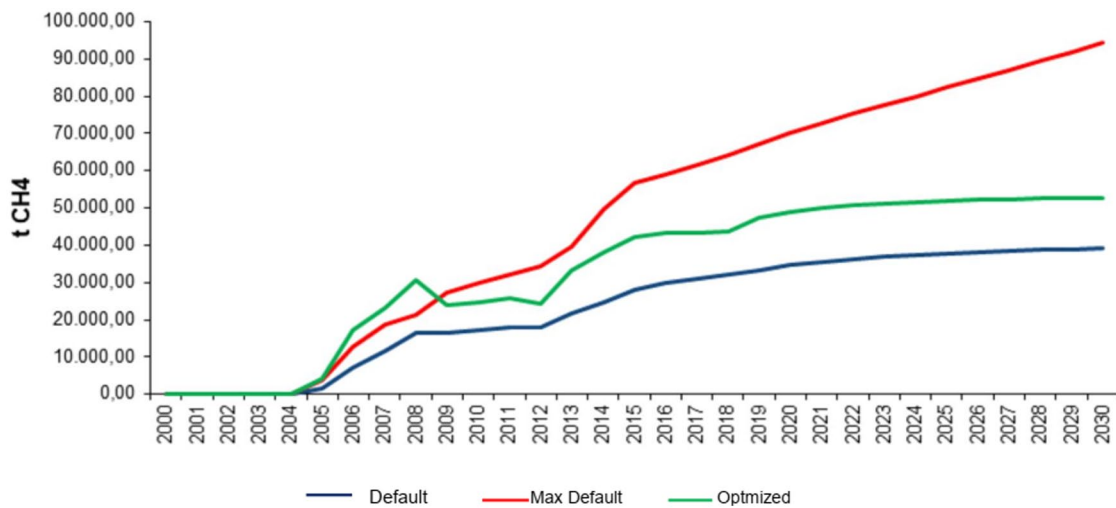
The GHG mitigation scenarios in the RMR, also, considered the evolution of treatment processes and the ATEPE/GRS/GIZ Study (2018) for the inclusion of GHG reduction in the National Basic Sanitation Plan, whose percentages were as follows:

- For conventional sanitary landfills with individual flare burning – 25%;
- For sanitary landfills with centralized burning, with forced extraction – 50%;
- For sanitary landfills with gas capture for energy purposes (electricity and biofuels) 75%;
- For landfills sustainable energy projects, designed and operated with a view to using gas – 90%.

In this context, considering the GRS/UFPE study, a 75% reduction in emissions was defined for 02 landfills (with energy generation) and 50% (with gas capture) in 01 in the scenarios.

The period of scenarios is from 2006 to 2030, with the objective of implementing the National Solid Waste Policy and reducing GHG emissions in order to reach the Brazilian NDC (Table 1).

In the Base Scenario, it took into consideration the solid waste management situation in the RMR during the period from 2006 until 2018, the population growth rate from IBGE (2000 to 2010 and 2010 to 2019), and the per capita generation of waste (BRAZIL 2006 to 2017). The initially infrastructure consisted of nine dumps and three controlled landfills. It was before undergoing a transition process so that in 2018 there was one landfill with centralized gas burning and other with capture but without burning of gas, one municipal landfill without capture of the gas generated, and one dump. Only 3.5% of the recycled materials



**Figure 1.** Behaviour of input values in the IPCC model – RM.  
Source: Adapted by FIRMO (2013), GAMA (2020).

were selectively collected and 0.001% of the organic fraction was diverted from landfill.

Scenario 1, from 2019 to 2025, predicts the deactivation of dumps and controlled landfills, with a projection of having two sanitary landfills that utilize energy from the methane generated. Assuming a reduction in emissions of 75% in 02 sanitary landfills with energy use and a 50% in which that use flare gas burning. Additionally, an increase of 15% in recyclables materials and 5% in organic matter were diverted to the landfills.

Scenario 2, from 2026 to 2030, differs from Scenario 1 in that it assumes that all three landfills will make use the methane generated to produce energy, and that there will be an increase in a selective collection of 30% of recyclable materials and 10% of the organic fraction diverted from the landfills.

In Scenario 3, covering the same period as Scenario 2, assumes that, in addition to the policies adopted in the previous scenarios, there will be a 50% reduction in organic matter in landfills, as provided for in the Preliminary National Solid Waste Policy (BRAZIL, 2011).

### Inputs used

Inputs included the population growth rate from the IBGE (2010/2019), the per capita generation of waste defined by the National Sanitation Information System (SNIS) (2006 to 2017) for RMR municipalities.

For the purpose of gas generation calculations, three input conditions were analysed in the IPCC (2006) model, considering the DOC and  $k$  – kinetic decay constant for the gravimetric components assigned by the IPCC (2006). Conditions: (a) maximum values of the recommended range, (b) the IPCC default (2006) and (c) the optimized values, obtained by Firmo (2013) in a survey carried out at the Muribeca controlled landfill, located in the RMR.

According to Firmo (2013), the relative error obtained between the optimized data in the RMR landfill experiment

and the IPCC defaults (2006) was 12.6%. Acceptable error, if compared with the results obtained of 18% by Oonk et al. (1994) using the multicomponent first-order model in 08 MSW landfills in the Netherlands. As well, Ogor and Guerbois (2005) stated that it was not possible to obtain estimates with relative errors of less than 10%, even with the optimization of the parameters, in an experiment in 05 sanitary landfills in France.

Choosing to use the values obtained in the optimized model by (FIRMO 2013; FIRMO et al., 2011) considering that, in addition to the data having been experimentally generated in a controlled landfill in the RMR, such values are relevant when compared with the default and maximum default of the IPCC, for presenting an acceptable deviation of approximately 10%. Figure 1 shows the behaviour of the 03 situations studied.

### Parameters changed – variants

Parameters modified to estimate the scenarios were the following: MCF and gravimetric composition.

The MCF, a factor referring to the management of disposal sites, in function the evolution of technological process for treatment and disposal of MSW, which modify the MCF. In this study, there is an operational transition in the destination of dumps and controlled landfills to sanitary landfills between the scenarios.

The gravimetric composition was other altered parameters according to the percentages of reduction of recyclable and organic material attributed for each scenario.

In Table 2 are the inputs: variants and constants used in the IPCC, 2006 model, considering the operational process and gravimetric component.

### Permissible emission limits from the Brazilian NDC

To calculate the permissible values for the emissions ceiling, the targets were set out in the Brazilian NDC (BRAZIL, 2015a), of which 37% was in 2025 and 43% was in 2030, applied against the

**Table 2.** Inputs: (a) MCF, (b) gravimetric composition and (c) constant by gravimetric composition.

(a) Recommended values for the MCF.		
IPCC (2006)	BRAZIL (2010)	Factor – MCF
Management	Sanitary landfill	1.0
Deep >5 m	Controlled landfill	0.8
Shallow <5 m, no management	Dumps	0.4
Not categorized	Not informed	0.6

Source: Adapted: IPCC (2006) e BRAZIL (2010).

(b) Gravimetric composition according to scenarios (%).						
Scenarios	Paper cardboard	Organic materials/food	Wood	Textiles	Sanitary	Inert/waste
Scenario Base	8.09	48.63	5.59	3.85	7.71	26.13
C1 2019–2025	6.88	46.20	5.31	3.27	7.71	30.63
C2 2026–2030	6.07	43.77	3.31	3.89	7.71	35.25
C3 2026–2030	6.07	21.89	1.66	3.89	7.71	41.22

Source: GAMA (2020).

(c) Constants used by gravimetric component.						
Composicao fracao de gas metano	DOC	DOC <sub>f</sub>	t1/2	K	F	
Organic material	0.20	0.79	2.00	1.40	0.50	
Paper/cardboard	0.45	0.79	2.00	0.10	0.50	
Wood	0.46	0.79	2.00	0.05	0.50	
Sanitary	0.32	0.79	2.00	0.20	0.50	
Textiles	0.40	0.79	2.00	0.085	0.50	
Inert/waste	0.00	0.79	2.00	0.00	0.50	

Source: Adapted: IPCC (2006), FIRMO (2013).

Source: Adapted IPCC (2006), FIRMO (2013), GAMA (2020).

absolute value of emissions estimated in 2005 and corrected by the GWP metric of 28, in accordance with the Paris Agreement. These are the limits necessary in order to keep the global average temperature increase below 2°C in relation to pre-industrial levels both to guarantee efforts and to limit the temperature rise up to 1.5°C (BRAZIL, 2017).

The 2005 CO<sub>2</sub>e emissions were reported from Reference Report of the Waste Sector in Pernambuco as part of the Brazilian Inventory of Anthropogenic Emissions and Greenhouse Gas Removal (Firmo and Rodrigues, 2009).

### Established emission targets

The emission targets for the scenarios were established by taking into consideration the National Solid Waste Police and proposals from the Brazilian Climate Forum, which provide actions to the expansion of selective collection, segregation of recyclable materials and organic, as well the capture of methane (CH<sub>4</sub>) emitted from landfills that generate energy for the implementation of the Brazilian NDC.

Concluding with a comparative analysis between the CO<sub>2</sub>e values obtained from the scenarios and the limits allowed for the period 2025–2030 by the Brazilian NDC.

The worksheets were prepared in Excel: The model (IPCC, 2006). The maps were prepared using ArcGIS, versions 10.3 (2013) and 10.7 (2019) of ESRI. (<https://www.esri.com/en-us/arcgis/about-arcgis/overview>).

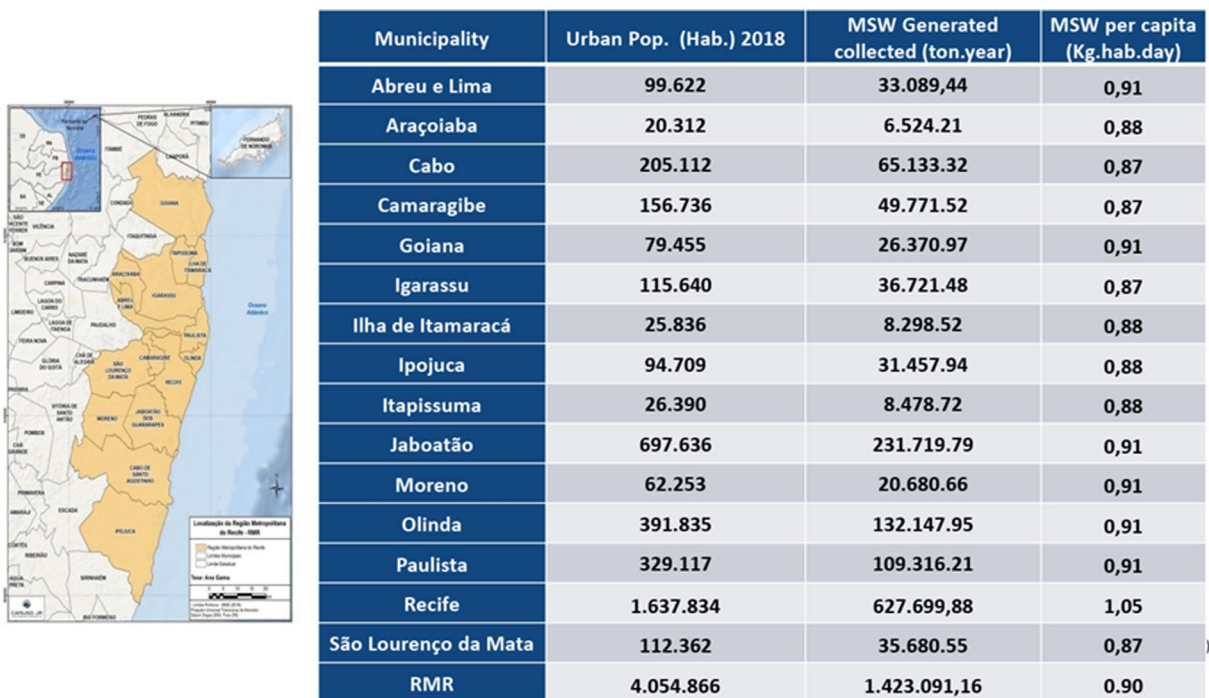
### Coverage area and population

The RMR is located on the coast in the northeast of Brazil, in the state of Pernambuco and includes 15 municipalities. In Figure 2 are maps, the estimates of the urban population of the RMR and the total and *per capita* waste generated in 2018.

## Results and discussion

### Situational diagnosis

The integrated management of solid waste in the RMR seeks to implement the three Rs: Reduce, Reuse and Recycle, defined in the Metropolitan Solid Waste Plan. The metropolitan MSW integrate management structure in the base year, 2018, consisted of two private waste treatment centres and a public sanitary landfill, one transfer station and two composting units, as its principal management units. One municipality disposed of waste in dump.



**Figure 2.** Map, population and total and per capita waste generated – RMR (2018). Source: Gama (2020).

Municipalities have a public service management body in their organizational structure. However, most of them outsource transport and conventional collection operations, which reach an average coverage of 92% (BRAZIL, 2017; Tavares, 2018).

Supporting the system, 27 organizations of recycled material collectors carry out selective collection, and there are several voluntary delivery points for the community.

### Treatment centres

The Pernambuco Treatment Centre, located in Igarassu, with an estimated useful life until 2032, serves 9 of the 15 municipalities in the RMR and is configured as an Ecopark, with mechanized treatment for sorting, production of fuel derived from waste (FDW), a composting unit and a landfill biogas power generation unit that will soon be installed.

The Candeias Treatment Centre, located in Jaboatão dos Guararapes, with an estimated useful life until 2033, serves 05 municipalities in the RMR and produces energy from the landfill's biogas. The Ipojuca Municipal Landfill uses gas capture.

### Gravimetric composition

The gravimetric composition is in accordance to the parameters attributed to the IPCC model (2006) and using the Quartering Method – Brazilian Norma – NBR 10.007 (ABNT, 2004).

The average percentages obtained in the gravimetric study from samples weighing 110 to 150 kg, for each municipality, carried out at the disposal sites in the RMR, were the following food

waste (48.63%), paper and cardboard (8.09%), textiles waste (3.85%), sanitary waste (7.10%) and wood (5.59%).

### Waste disposed

In the RMR, approximately  $1.22 \times 10^6$  t-years were deposited, of which  $0.77 \times 10^6$  were deposited in the Candeias CTR Waste Treatment Centre; 63% of the total waste disposed;  $0.34 \times 10^6$  t-year (28%) in the Pernambuco CTR;  $0.04 \times 10^6$  t-year (4%) at the public landfill and  $0.07 \times 10^4$  t-year (5%) in dumps (Figure 3).

Figure 3 shows the location of central treatment and the amount of waste deposited in each site of disposal in the RMR.

It is important to note that the municipality of Recife, which has the largest population within the RMR, deposits its MSW in the Candeias CTR.

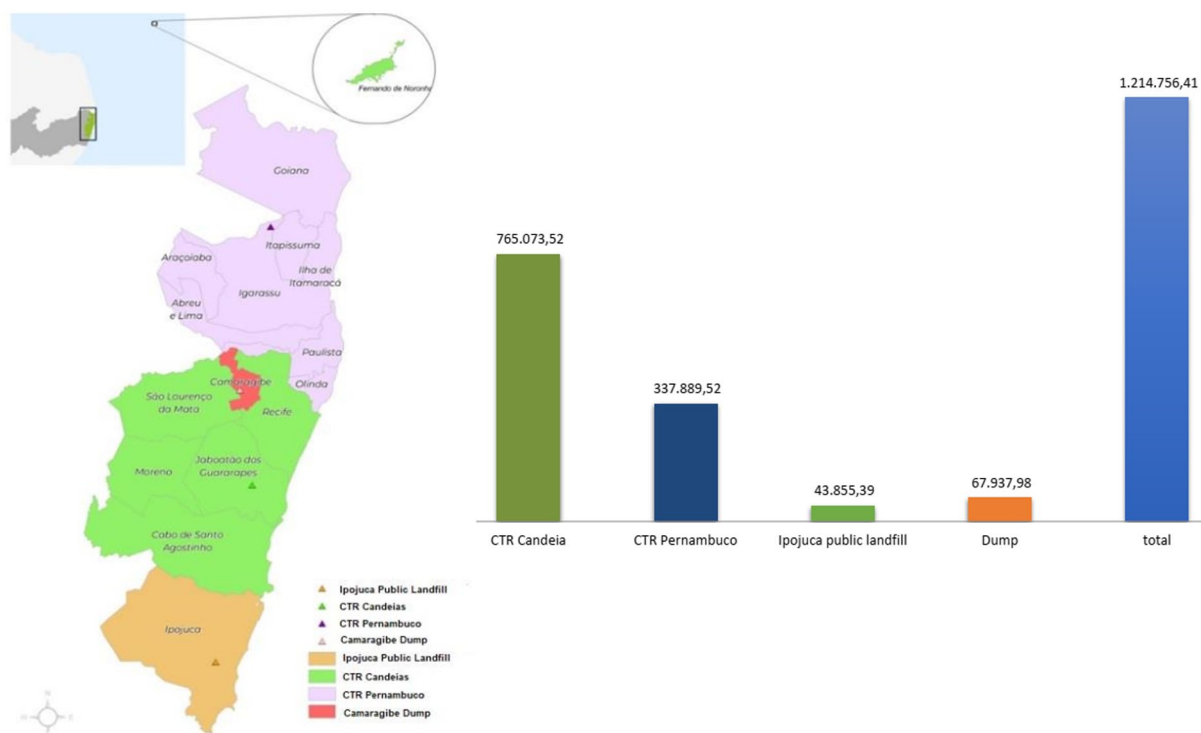
There is a deficit of approximately 15% between the amounts of waste generated  $1.42 \times 10^6$  t-years (Figure 2) and the amounts disposed reported by the treatment centres and municipalities  $1.22 \times 10^6$  t-years, which, if collected, was in locations different from those studied or disposed of randomly on the ground by the population.

### GHG emission estimates by municipalities

The results from the Inventory of Anthropogenic GHG Emissions and Removal for the period from 2006 to 2018 point out that, in their entirety, the municipalities of the RMR generated  $9.04 \times 10^5$  t of  $\text{CH}_4$ , corresponding to  $2.53 \times 10^7$  t $\text{CO}_2\text{e}$ , based on the GWP metric of 28.

The municipality of Recife is the largest emitter and contributed  $1.22 \times 10^7$  t $\text{CO}_2\text{e}$ , approximately four times more than the





**Figure 3.** Location and amount of waste disposed in the RMR (2018). Source: Gama (2020).

municipalities in the second and third places, Jaboatão dos Guararapes with  $0.38 \times 10^7$   $tCO_2e$  and Olinda with  $0.33 \times 10^7$   $tCO_2e$  which add up to 76% of total emissions, the other 13 municipalities add up to 24%.

Comparing the data obtained from the GHG Emissions Inventory in Pernambuco, in the period between 2015 and 2018 (PERNAMBUCO, 2019), and those obtained in this study, it appears that of the  $1.61 \times 10^7$   $tCO_2e$  emitted by the state, 65.8% comes from the RMR, totalling  $1.06 \times 10^7$   $tCO_2e$  in the 4-year period studied.

### Emission estimates by disposal sites

Estimates of emissions by solid waste disposal sites in the RMR, in the period from 2005 to 2018, were approximately  $2.53 \times 10^7$ , of which  $0.01 \times 10^7$  from dumps,  $0.37 \times 10^7$  controlled landfills and in sanitary landfills  $2.10 \times 10^7$  that receive most of the waste generated.

The evolution of carbon dioxide emissions from dumps over the period from 2005 to 2018, by municipalities, showed that the dumps of Ipojuca, Paulista, Cabo de Santo Agostinho and Abreu e Lima were the ones that contributed and those of São Lourenço and Camaragibe continue with the same pattern of contribution.

From 2009, there was an increase in the disposal of waste in landfills and between 2011 and 2018, most municipalities began to dispose of their waste at RMR treatment centres to meet the National Solid Waste Policy - PNRS and then, the consequent gradual deactivation of dumps. In fact, in 2017, there were 02 active dumps and in 2019 only one, closed in 2020.

Controlled landfills – AC contributed approximately  $0.37 \times 10^7$   $tCO_2e$ . These were Muribeca in Jaboatão dos Guararapes and Aguazinha in Olinda, which contributed to the generation of approximately  $0.30 \times 10^7$   $tCO_2e$  and  $0.06 \times 10^7$   $tCO_2e$ , respectively, over the period from 2006 to 2018. These two controlled landfills received waste from the most populous municipalities, such as Recife, Jaboatão dos Guararapes and Olinda. In 2013, the municipality of Ipojuca transformed its dump into a controlled landfill, which operated in this manner until 2018 and generated approximately  $0.01 \times 10^7$   $tCO_2e$ .

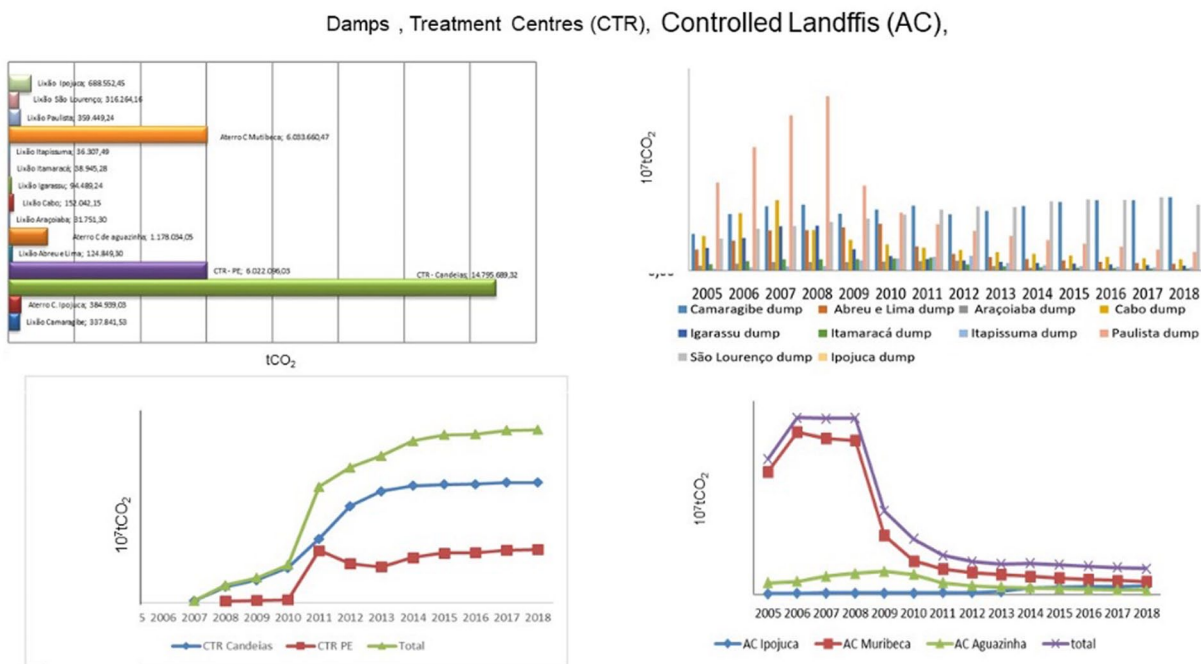
Figure 4 shows the emission estimated by disposal sites.

The waste treatment centres emitted approximately  $2.10 \times 10^7$   $tCO_2e$  over the period from 2006 to 2018, with CTR Candeias responsible for  $1.47 \times 10^7$   $tCO_2e$  and CTR Pernambuco responsible for  $0.60 \times 10^7$   $tCO_2e$ .

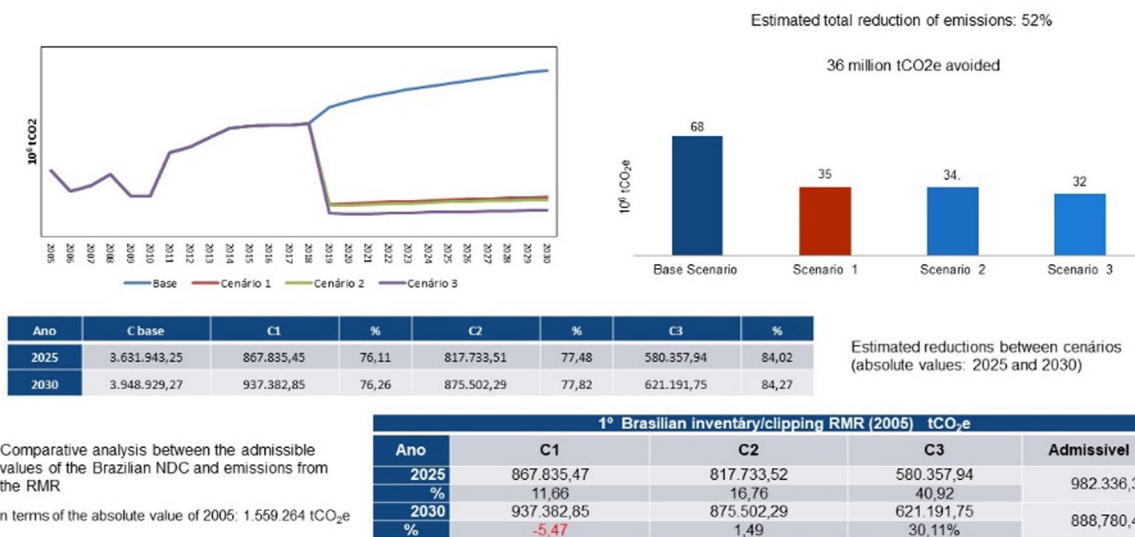
### Scenarios

*Comparative analysis of emissions scenarios.* The behaviour of the projected emissions, according to the scenarios considered, is in Figure 5. The growth trend of emissions in the Base Scenario if the interventions foreseen in the other scenarios do not occur can be observed, as well as the decrease that occurs with the implementation of the scenarios, which shows an already sharp drop in Scenario 1, from 2019 to 2022.

As a result of the projections made in the study, it was determined that about 68 million  $tCO_2e$  would be emitted in the Base Scenario, 35 million  $tCO_2e$  in Scenarios 1 and 2 and 32 million  $tCO_2e$  in Scenario 3.



**Figure 4.** CO<sub>2</sub>e emitted by disposal sites in the RMR. Source: Gama [2020].



**Figure 5.** Comparative analysis between scenarios and the NDC values. Source: Gama [2020].

Comparing the Base Scenario and Senario 3, the emissions avoided due to solid waste disposal in the RMR would be approximately 36 million tCO<sub>2</sub> in the period from 2006 to 2030 (Figure 5).

*Comparative analysis of scenarios with the NDC.* The allowable emissions limits, as shown in Figure 5, due to the reductions assumed by the country in 2015, compared to the value from 2005 (1,559,254.00 tCO<sub>2</sub>e), for the years 2025 (37%) and 2030 (47%), were 982,336.32 tCO<sub>2</sub>e and 888,780.48 tCO<sub>2</sub>e, respectively.

The comparative analysis between the permissible limits and the results from the scenarios studied with the Brazilian NDC can be seen in Figure 5.

The values obtained show that the Brazilian NDC requirements would be met in 2025 for all scenarios and in 2030 for all except Scenario 1, where emissions would be 5.47% higher than the value permitted for that year.

### Conclusion

The application of the mathematical model of FOD of the IPCC fed with the local data of the RMR allowed calculating the inventories with estimation of municipalities annual and cumulative CO<sub>2</sub>e emissions in the studied period 2006 to 2030, thus making it possible to know the values to reach the Brazilian NDC.

In order to comply with the Brazilian NDC, it is necessary to implement public policies and investments foreseen in the mitigation scenarios.

The implementation of the scenarios will avoid approximately 36 million tCO<sub>2</sub>e of emissions from the disposal of MSW in the RMR, equivalent to a reduction of 52% by 2030, higher than the 47% promised by the country in the Paris Agreement in 2015. However, it is necessary for the municipalities to make efforts to implement a selective collection programme in order to achieve the goals of reducing recyclable materials and organic materials.

In addition, the functioning of the processing units must be strictly controlled by the regulatory bodies, in order to maintain the current operational quality standards.

This study contributes to the improvement of the management of solid waste and supports the formulation of public policies in partnership with the municipalities and the private sector.

For continuity of this study, it is recommended:

An additional study carried out to assess the emissions by mechanized treatment, by FDW production and energy use, with an analysis of the life cycle of the MSW production chain in the context of a circular economy and to study the conditions of the areas degraded by the deactivated dumps and ways to remedy them.

## Acknowledgements

The authors would like to thank the Federal University of Pernambuco, through the Department of Civil Engineering/Waste Group and the Government of the State of Pernambuco, through the Secretariat for Urban Development and Housing, for supporting the development of this study.

## Declaration of conflicting interests

The authors declared no potential conflicts of interest with respect to the research, authorship, and/or publication of this article.

## Funding

The authors received no financial support for the research, authorship, and/or publication of this article.

## ORCID iD

Ana Maria Cardoso de Freitas Gama  <https://orcid.org/0000-0003-4022-0705>

## References

Associação Brasileira de Normas Técnicas (ABNT) (2004) *Resíduos sólidos – Classificação*. Available at: <https://www.unaerp.br/documentos/2234-abnt-nbr-10004/file> (accessed 20 August 2015). In Portuguese.

Associação Brasileira de Empresas de Limpeza Pública e Resíduos Especiais (ABRELPE) (2016) *Panorama dos Resíduos Sólidos no Brasil 2016*. Available at: <http://www.abrelpe.org.br/Panorama/panorama2016.pdf> (accessed 17 July 2016). In Portuguese.

Associação Brasileira de Empresas de Limpeza Pública e Resíduos Especiais (ABRELPE) (2019) *Panorama dos Resíduos Sólidos no Brasil 2019*. Available at: <http://www.abrelpe.org.br/Panorama/panorama2017.pdf> (accessed 12 May 2017). In Portuguese.

ATEPE/GRS/UPFE GIZ (2018) *Caderno 2: gestão de resíduos sólidos urbanos com baixas emissões de carbono*. Brasília. In Portuguese: ATEPE - Associação Tecnológica de Pernambuco.

Baltar SL, Andrade JCS and Nascimento LFM (2021) Recife: A climate action profile. *Jurnal Cities* 116: 103270.

BRAZIL (2007) Lei Federal N° 11.445, de 5 de janeiro de 2007. Estabelece diretrizes nacionais para o saneamento básico e dá outras providências. Diário Oficial da União, Brasília, DF, 5 January 2007. In Portuguese.

BRAZIL (2006 to 2017) National Sanitation Information System (SNIS). Available at: <http://www.snis.gov.br/painel-informacoes-saneamento-brasil/web/painel-residuos-solidos> (accessed 06 July 2018). In Portuguese.

BRAZIL (2010) Lei Federal n° 12.305, de 02 de agosto de 2010. Institui a Política Nacional de Resíduos Sólidos; altera a Lei n° 9.605, de 12 de fevereiro de 1998, e dá outras providências. Diário Oficial da União, Brasília, 02 August 2010. In Portuguese.

BRAZIL (2011) Ministério de Meio Ambiente. Plano Nacional de Resíduos Sólidos. Versão Preliminar. Brasília. In Portuguese.

BRAZIL (2015a) Acordo de Paris. Available at: <http://www.mma.gov.br/clima/convencao-das-nacoes-unidas/acordo-de-paris> (accessed 02 January 2018). In Portuguese.

BRAZIL (2015b) Lei Federal n° 13.089, de 12 de janeiro de 2015. Estatuto da Metrópole. Institui o Estatuto da Metrópole, e dá outras providências. Diário Oficial da União, Brasília, 12 January 2015. In Portuguese.

BRAZIL (2016) Ministério da Ciência, Tecnologia, Inovações e Comunicações. Terceiro inventário de gases de efeito estufa. Disponível <http://www.sirene.mcti.gov.br/publicacoes> (accessed 06 January 2018). In Portuguese.

BRAZIL (2017) Ministério da Ciência, Tecnologia, Inovações e Comunicações. Trajetórias de mitigação e instrumentos de políticas públicas para alcance das metas brasileiras no acordo de Paris. Available at: <http://www.sirene.mcti.gov.br/publicacoes> (accessed 11 January 2018). In Portuguese.

Caetano M, Góis J and Leitão A (2019) Challenges and perspectives of greenhouse gases emissions from municipal solid waste management in Angola. *Energy Reports* 6: 364–369.

Ramprasad C, Teja HC, Gowtham V, et al. (2022) Quantification of landfill gas emissions and energy production potential in Tirupati Municipal solid waste disposal site by LandGEM mathematical model. *MethodsX* 9: 101869.

Costa IM and Dias MF (2019) Evolution on the solid urban waste management in Brazil: A portrait of the Northeast Region. *Energy Reports* 6: 878–884.

European Climate Foundation (ECF) 2014. Climate Change: Implications for cities. Available at: [https://catalogue.unccd.int/384\\_IPCC\\_AR5\\_Cities\\_Summary\\_FINAL\\_Print.pdf](https://catalogue.unccd.int/384_IPCC_AR5_Cities_Summary_FINAL_Print.pdf) (accessed outubro/2018).

Gama ACF (2003) Avaliação da agenda 21 da bacia hidrográfica do rio Pirapama. Recife: UFPE. 172 f. Dissertação (Mestrado de Gestão e Políticas Ambientais) - Universidade Federal de Pernambuco, Recife. 2003. In Portuguese.

Gama ACF (2020) Estudo das emissões e cenários de mitigação de gases de efeito estufa no setor de resíduos sólidos na Região Metropolitana do Recife. Recife, 171f. Tese (Doutorado em Engenharia Civil) - Universidade Federal de Pernambuco. In Portuguese.

GIZ Deutsche Gesellschaft für Internationale Zusammenarbeit GmbH (2017). *Sectorial implementation of nationally determined contribution (NDCs): circular economy and solid waste management*. Briefings series. BONN, october.

Firmo ALB (2013) Estudo numérico e experimental da geração de biogás a partir da biodegradação de resíduos sólidos urbanos. 286 f. Tese (Doutorado em Engenharia Civil) - Universidade Federal de Pernambuco, Recife, 2013. In Portuguese.

Firmo ALB, Guimarães LJJ, Maciel FJ, et al. (2011) Estimate of methane generation in experimental landfill located at Muribeca Landfill/Brazil - using simplified methods. Fourth International workshop hydro-physico-mechanics of landfill. Spain: Santander. In Portuguese.

Firmo ALB and Rodrigues TSN (2009) Inventário de emissões de metano pelo manejo de resíduos sólidos urbanos no Estado de Pernambuco no período de 1990 a 2005. Relatório técnico. UFPE/GRS. Recife. In Portuguese.

IBGE (2010/2019) Instituto Brasileiro de Geográfico a Estatística. Cidades. Rio de Janeiro. Available at: <http://cidades.ibge.gov.br/xtras/uf.php?coduf=26> (accessed 20 May 2019). In Portuguese.

IPCC (2016) Summary for policymakers of IPCC special report on global warming of 1.5°C approved by governments, October 8, 2016.

- IPCC (2014) Summary for policymakers. In: Climate Change 2014: Impacts, Adaptation, and Vulnerability. Part A: Global and Sectoral Aspects. Contribution of Working Group II to the Fifth Assessment Report of the Intergovernmental Panel on Climate Change. GENEVA.
- IPCC (2000) Good practice guidance and uncertainty management in national greenhouse gas inventories. In: Penman J, Kruger D, Galbally I, et al. (eds) *Intergovernmental Panel on Climate Change (IPCC)*, Hayama, Japan: IPCC/OECD/IEA/IGES.
- IPCC (2006) *Guideline for National Greenhouse Gas Inventories*. Available at: [http://www.ipcc-nggip.iges.or.jp/public/2006gl/pdf/5\\_Volume5/V5\\_3\\_Ch3\\_SWDS.pdf](http://www.ipcc-nggip.iges.or.jp/public/2006gl/pdf/5_Volume5/V5_3_Ch3_SWDS.pdf) (accessed 03 February 2018).
- Jucá JFT, Lima JD, Mariano MOH, et al. (2013) Análise das Diversas Tecnologias e Disposição Final de Resíduos Sólidos Urbanos no Brasil, Europa, Estados Unidos e Japão. Recife: BNDS, FADE, UFPE, GRS. In Portuguese.
- Loureiro SM, Rovere ELL and Mahler CF (2013) Analysis of potential for reducing emissions of greenhouse gases in municipal solid waste in Brazil, in the state and city of Rio de Janeiro. *Waste Management* 33: 1302–1312.
- Kässmayer K and Fraxe Neto HJ (2016) A entrada em vigor do acordo de Paris: o que muda para o Brasil. Brasília. *Senado Federal*. Available at: <http://www2.senado.leg.br/bdsf/handle/id/528873> (accessed 03 February 2018). In Portuguese.
- PBMC (2016) Mudanças climáticas e cidades: relatório especial do painel brasileiro de mudanças climáticas. In: Ribeiro SK and Santos AS (Eds.). *PBMC, COPPE – UFRJ*. Rio de Janeiro, Brasil. 116p. 2016. In Portuguese.
- Ogor Y and Guerbois M (2005) Comparison of landfill methane emission models: a case study. Proceeding Sardinia. *Tenth International Waste Management and Landfill Symposium*, Cagliari, Italy, October 2005.
- Oliveira LRG, Santos Filho DLA, Vasconcelos KC, et al. (2018) Methanization potential of anaerobic digestion of solid food waste, *Revista Brasileira de Engenharia Agrícola e Ambiental*, Campina Grande/PB. v22. N.1, p. 69–73.
- Oonk H, Weenk A, Coops O, et al. (1994) *Validation of landfill gas formation models*, Report n. 94-315. Apeldoorn, Netherlands: Dutch organization for Applied Scientific Research.
- Paredes MG, Güereca LP, Molina LT, et al. (2019) Methane emissions from anaerobic sludge digesters in Mexico: On-site determination vs. IPCC Tier 1 method. *Science of the Total Environment* 656: 468–474.
- Paz F and Firmo ALB (2015) *Inventory of methane emission from municipal solid waste management in Pernambuco State*, vol. 20. Brasil: EJGE.
- PERNAMBUCO (2019) *Secretaria de Meio Ambiente e Sustentabilidade do Estado de Pernambuco. Inventário de emissões de gases de efeito estufa do Estado de Pernambuco - 2015 a 2018*, Recife: SEMAS. In Portuguese.
- Rosenzweig C, Solecki WD, Hammer SA, et al. (2011) *Urban Climate Change in Context. Climate Change and Cities: First Assessment Report of the Urban Climate Change Research Network*. Cambridge, UK: Cambridge University Press, pp. 3–11.
- Santos LA, Valença BR, Silva LCS, et al. (2020) Methane generation potential through anaerobic digestion of fruit waste. *Journal of Cleaner Production* 256: 120389.
- Seeg (2017) *Estimativas de emissões de gases de efeito estufa do Brasil 1970-2016*. São Paulo. In Portuguese: SEEG – Sistema de Estimativa de Emissões de Gases. [https://plataforma.seeg.eco.br/total\\_emission](https://plataforma.seeg.eco.br/total_emission)
- Tavares GSC (2018) *Contribuição para a sustentabilidade na gestão dos resíduos sólidos urbanos nos municípios da Região Metropolitana*. 2018. 66 f. Dissertação (Mestrado em Engenharia Civil) - Universidade Federal de Pernambuco, Recife. In Portuguese.
- UN (2018) *Revision-of-World-Urbanization-Prospects*. Available at: <https://www.un.org/development/desa/en/news/population/2018> (accessed 06 January 2018).
- UNEP (2018) *Intergovernmental Panel on Climate Change. Global Warming of 1.5°C*. Available at: <http://www.ipcc.ch/report/sr15/> (accessed 25 November 2018).
- UNEP (2011) *Near-term climate protection and clean air benefits: Actions for controlling short-lived climate forcers*. Kenya: UNEP.
- UNEP & ISWA (2015) *Global Waste Management Outlook*. Available at: [https://www.unep.org/ietc/sites/unep.org/ietc/files/GWMO\\_summary\\_0.pdf](https://www.unep.org/ietc/sites/unep.org/ietc/files/GWMO_summary_0.pdf) (accessed 14 September 2018).